

Chiropractic Grand Rounds - August 2, 2019

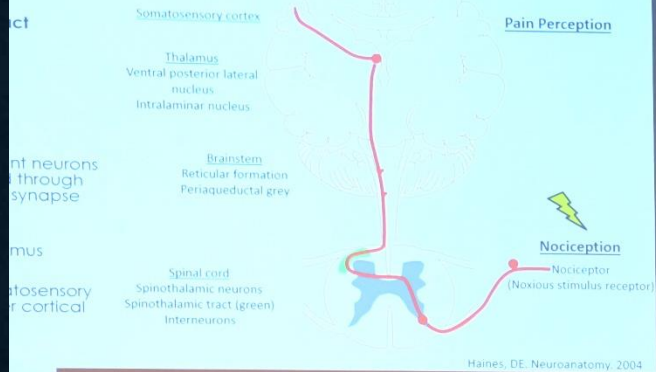
ADVANCING CHIROPRACTIC WITH ADVANCED MAGNETIC RESONANCE IMAGING



Kenneth A. Weber II, DC, PhD

Instructor, Stanford University
Systems Neuroscience and Pain Lab Department of
Anesthesiology, Perioperative and Pain Medicine

anatomy



Neuroanatomy

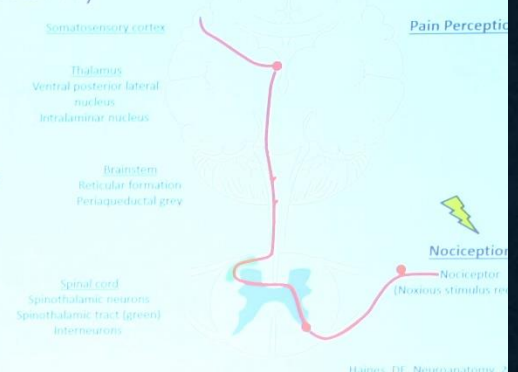
Spinothalamic tract

- Function
- Temperature
 - Nociception
 - Crude touch

Peripheral afferent neurons enter spinal cord through dorsal roots and synapse on interneurons

Projects to thalamus

Projects to somatosensory cortex and other cortical areas





y = 58 y = 64 x = 54 x = 64 y = 58 y = 64 x = 54 x = 64



z = 310 z = 370 z = 390 z = 310 z = 330 z = 370 z = 390

p-value
0.05 0.0005

1.65, cluster threshold $p < 0.05$; no activity with task control



ADVANCING CHIROPRACTIC WITH ADVANCED MAGNETIC RESONANCE IMAGING

Kenneth A. Weber II, DC, PhD

Instructor

Stanford University School of Medicine

Department of Anesthesiology, Perioperative and Pain Medicine

Division of Pain Medicine

Systems Neuroscience and Pain Lab (SNAPL)

kenweber@stanford.edu

@DrKenWeber



ADVANCING CHIROPRACTIC WITH ADVANCED MAGNETIC RESONANCE IMAGING

Kenneth A. Weber II, DC, PhD

Instructor

Stanford University School of Medicine

Department of Anesthesiology, Perioperative and Pain Medicine

Division of Pain Medicine

Systems Neuroscience and Pain Lab (SNAPL)

kenweber@stanford.edu

@DrKenWeber

